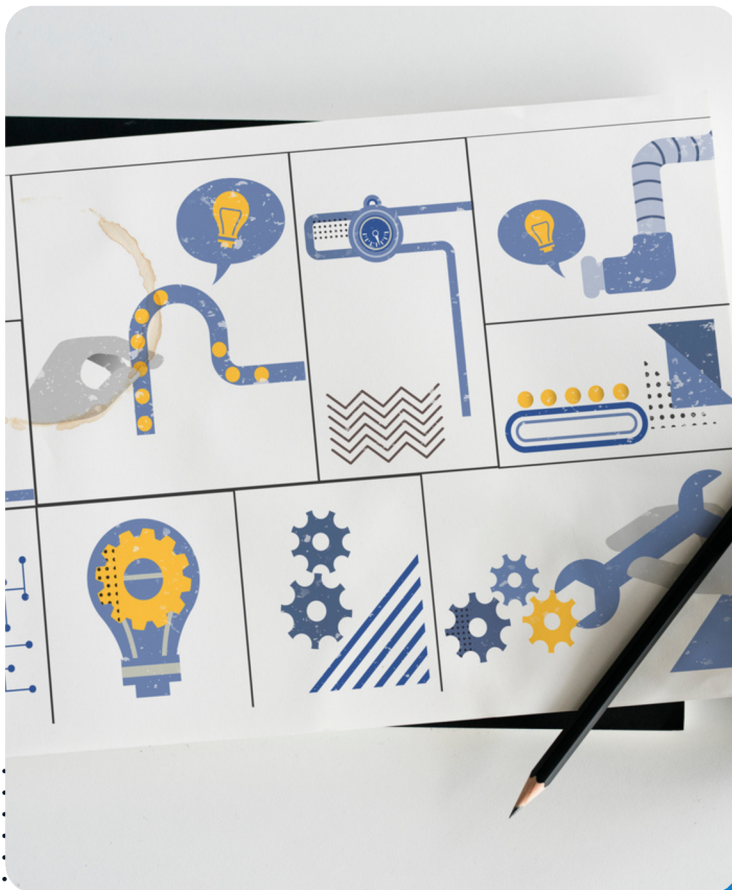




Issue Tracking Software: The Manufacturer Buyer's Guide



SCALE BEYOND SPREADSHEETS:
A PRACTICAL ROADMAP TO MODERN PLANT OPERATIONS



Manufacturing

2026-2027



INCLUDES: 5-STEP EVALUATION CHECKLIST





Executive Summary

Issue Tracking for Manufacturers



Why this guide, and who is it for?

If you are managing quality assurance, complaints, and internal issues through email and spreadsheets, this guide is for you.

We focus on practical steps over theory. By the end of this guide, you will have the tools to move from scattered manual handling to a simple, trackable system that fits your existing floor operations. You'll learn how to:

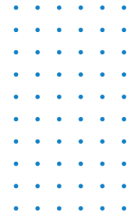
- **Evaluate** software without a massive IT team.
- **Design** a realistic pilot program.
- **Shortlist** vendors based on grounded manufacturing needs.

You might be here if you have:

- **Spreadsheet Fatigue:** You're ready to trade messy, disconnected files for a single source of truth.
- **Audit Stress:** You spend days "reconstructing" issue histories before every customer or ISO audit.
- **The Black Hole:** You lose visibility into complaints or tasks once the initial response is sent.

Visit www.issuetrak.com to see a live demo.





➔ Introduction

Who This Guide Is For

- **Plant managers** at 50–500 person facilities
- **Quality managers** handling ISO compliance
- **Operations managers** tracking SLA performance
- **Facilities teams** managing maintenance requests

Where Small Plants Are Today

Traditional management methods often rely on fragmented communication. The result?

- **Information silos:** Data trapped in individual inboxes.
- **Shift Friction:** Poorly executed handoffs lead to missed maintenance and product issues.
- **Audit Fatigue:** Teams waste hours “reconstructing” histories instead of fixing problems.

While these habits work at small scale, they inevitably break down as your head count and order volumes grow.

➔ Internal vs. Customer-Facing Issues

Issues in a plant typically fall into two broad categories: internal and customer-facing. Treating these as separate streams often leads to partial views, where customer problems and internal root causes are not clearly linked. A useful issue tracking system should handle both types while still allowing you to report on them separately.



01

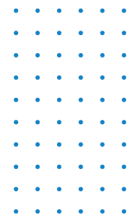
Internal Issues & Requests Affect Operations/Production

- Line stoppages
- Nonconformances
- Safety Incidents
- Maintenance & Facilities Needs
- IT tickets

02

Customer-Facing Issues Affect Relationships & Revenue

- Complaints
- Returns or Repairs
- Warranty Claims
- Post-Installation Service requests
- Aftermarket Follow Ups



→ Spreadsheets Can't Manage It All

Why Ad-hoc Tools Start to Fail

Email, spreadsheets, and shared drives may feel safe, but they are not built for the complexity of a shop floor. As production grows, these manual methods fail to:

- Assign ownership: Issues get buried in inboxes, leading to missed follow-through across shifts.
- Identify Trends: Without centralized data, you can't spot repeat defects by part, line or supplier.

Audit with Confidence: Teams are reactive rather than proactive, scrambling to reconstruct histories for customer visits or audits.

Symptoms Checklist

Are you suffering from..?

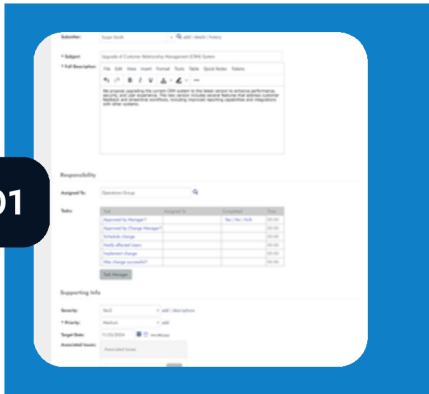
- We lose track of who owns what
- We see the same problems repeatedly
- Preparing for audits is time-consuming
- Engineering and Quality aren't on the same page

2-4x faster

Customers report spending less time on manual efforts, resolving issues **2-4 times faster**.



➔ What to Look For When Choosing a System



01

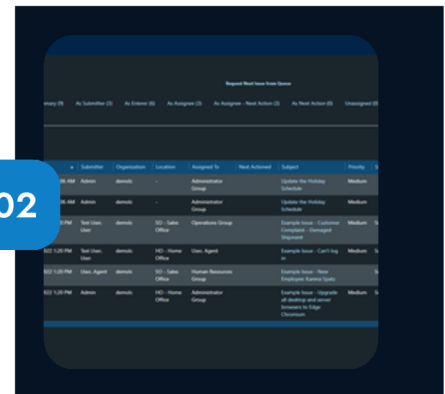
A Single Source of Truth

Stop hunting through inboxes. A plant-ready system consolidates every issue, from customer complaints and non-conformances to internal safety reports, into one dashboard.

- **No “Tech Speak”:** Use terminology your team already knows.
- **Instant Visibility:** See exactly who owns a task and what’s waiting on approval at a glance.

Seamless Operational Workflows

Your software should mirror how your plant actually runs. Smart workflows automatically route issues by type, line, or priority, guiding them through investigation, approval, and closure. By automating handoffs, you ensure nothing is forgotten between shifts.



02

Predictive Trend Reporting



03

Move from “guessing” to “knowing”. Instead of reacting to individual fires, use real-time data to identify which parts fail most often or which lines cause the most delays.

- **Identify Root Causes:** Stop repeat defects before they reach the customer.
- **Quantify Quality:** Measure the true cost of poor quality with data-backed reports rather than rough estimates.



Common Constraints

Constraints

Lean Teams: Limited IT support and small administrative bandwidth.

Tight Timelines: Minimal time for implementation or long training cycles.

Budget Pressure: Systems must show clear ROI and predictable costs.

Varied Tech Skills: Software must be intuitive for users at every comfort level.

What to Look For

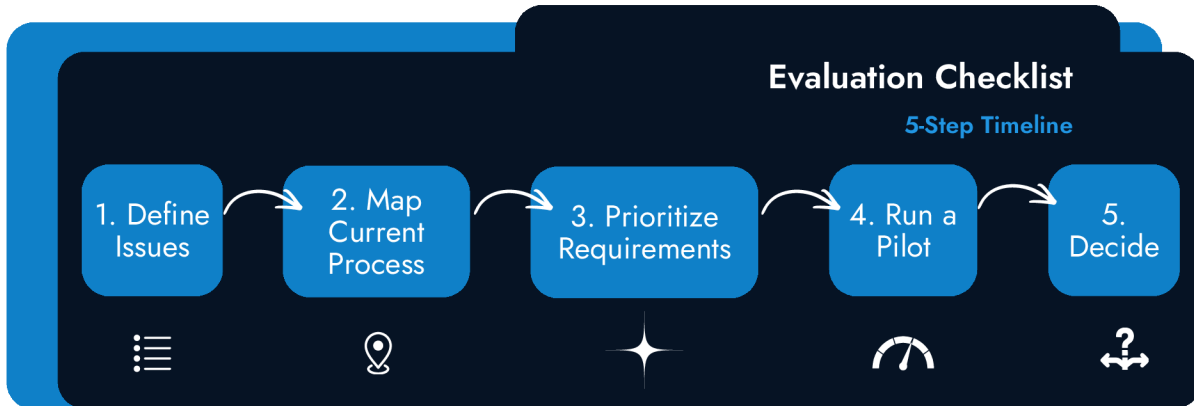
- No Dedicated Admin Required
- Flexible Configuration & Intuitive UI
- Predictable, Transparent Pricing
- Help Center Articles & YouTube Tutorials

A QMS or ERP may not address operational stopgaps.

Adding issue tracking software to your tech stack creates fluid workflows so no issue gets blocked.

→ 5 Steps to Selecting Your First Issue Tracking System

Don't let your software search stall. Use this structured approach to compare vendors and find the right fit for your plant.



TIP! Start with one or two use cases rather than trying to cover everything at once.

5 Step Evaluation: Deciding on Issue Tracking Software

- 1. Define your key issue types.**
 - Nonformances, Maintenance, Defects, Shipments, other?
- 2. Map your process for 1–2 use cases.**
 - Use your most common issue as a model.
- 3. Prioritize requirements (must-haves vs nice-to-haves).**
 - Automated routing, cross-team visibility, and mobile access. Can supervisors see all open issues by line and shift in one view?
- 4. Run a small pilot.**
 - Get the team involved to ensure it's easy to use. Recommended KPIs: number of repeat complaints, hours spent preparing for audits.
- 5. Decide and evaluate results.**
 - Does this system actually save time? As in: faster turnaround, less email clutter, and clearer accountability.

Red Flags for Small Plants

- 1. Enterprise-Scale Implementations:** If it takes 6 months to go live, it's too slow for your needs.
- 2. Heavy Consulting Fees:** You shouldn't need a team of high-priced consultants just to set up a workflow.
- 3. Complex Custom Coding:** Look for "configuration," not "coding." You want to be able to make changes yourself without calling IT.

Printable Checklist for Vendor Evaluation

Use this framework during your demos to ensure the software solves your specific plant floor challenges.

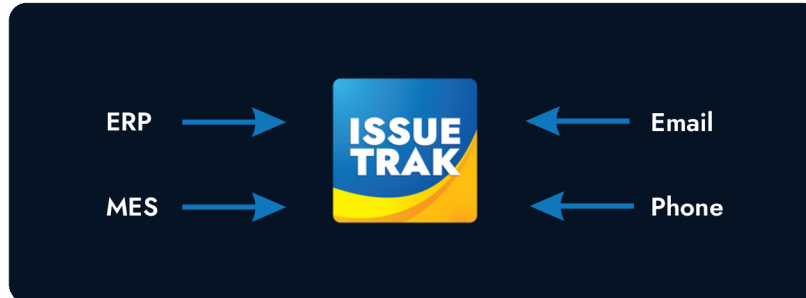
How to use this checklist:

- Mark which items are critical priority and which are optional before you talk to vendors.
- After demos, record brief notes on how each vendor addresses each item.

| Evaluation Category | Critical Priority | Vendor Notes |
|--|--------------------------|--------------|
| <p>Intake & Channels</p> <p>Ask: "Can we submit issues via email, mobile, and web forms? Is there a kiosk mode for the shop floor?"</p> | <input type="checkbox"/> | |
| <p>Workflows & SLAs</p> <p>Ask: "Can we automate assignments based on the type of defect? Can we set 'overdue' alerts for maintenance?"</p> | <input type="checkbox"/> | |
| <p>Reporting & Analytics</p> <p>Ask: "Can I pull a report on the 'Cost of Quality' or 'Repeat Defects' without calling IT?"</p> | <input type="checkbox"/> | |
| <p>Configuration Ease</p> <p>Ask: "How much of this can I change myself? Is it 'drag-and-drop' or does it require coding?"</p> | <input type="checkbox"/> | |
| <p>Deployment & Security</p> <p>Ask: "Is my data hosted in the cloud or on-prem? How fast can we go live?"</p> | <input type="checkbox"/> | |
| <p>Support & Services</p> <p>Ask: "Do you offer live support or just a ticket system? Is there a library of training videos for my team?"</p> | <input type="checkbox"/> | |

→ How Issuetrak Aligns with Manufacturing Requirements

Issuetrak bridges the communication gaps in your plant, extending the power of your ERP or MES by capturing the human-led issues those systems often miss.



Key Requirements

How Issuetrak Supports This

Intake

Multi-channel capture: Convert emails to tickets automatically, use custom web forms, or log internal plant floor submissions.

Workflows

Standardized processes: Deploy CAPA-style flows with automated task lists, multi-stage approvals, and digital sign-offs.

Reporting

Real-time visibility: Access dashboards for nonconformances and SLAs. Track "Cost-of-Poor-Quality" using live, captured data.

Scope

Cross-departmental utility: A single system to manage Quality, Customer Support, Maintenance, and internal IT requests.

Issuetrak is an operational workflow tool designed to complement, not replace, your QMS. We handle the daily 'how' so your QMS can focus on the 'compliance'.



Built for Lean, High-Impact Teams



SIMPLE SETUP

What this means for you:

You can customize your own workflows in minutes using simple forms, no coding or IT degree required.



FLEXIBLE LICENSING

What this means for you:

Scale without the headache. Add unlimited requesters across your plant without worrying about 'per-seat' cost barriers.



GUIDED SUPPORT

What this means for you:

You aren't just buying software; you're getting a partner. We help you launch your first use case so you see value on day one.



DEPLOYMENT OPTIONS

What this means for you:

Whether you need the ease of the Cloud or the control of On-Prem, we fit your existing security and IT infrastructure.

Real World Results

Success Stories from Manufacturing Customers

Before

- Outdated legacy tracking
- Slow response times
- Service gaps
- Lack of data visibility

After

- Equipment performance tracking
- Proactive maintenance
- Eliminated inbox bottlenecks
- Proactive recurrence prevention

Stryker *Medtech Repair*

Outcome

- Accelerated technician response
- Reduced downtime



Before

- Lost requests due to email silos
- Confusing duplication
- Disconnected departments
- Distracting notifications
- No way to log issues
- Manual, inconsistent reporting

After

- Standardized, automated workflows
- Structured approvals
- Real-time status updates

Max Packaging **Solutions**

Equipment Requests

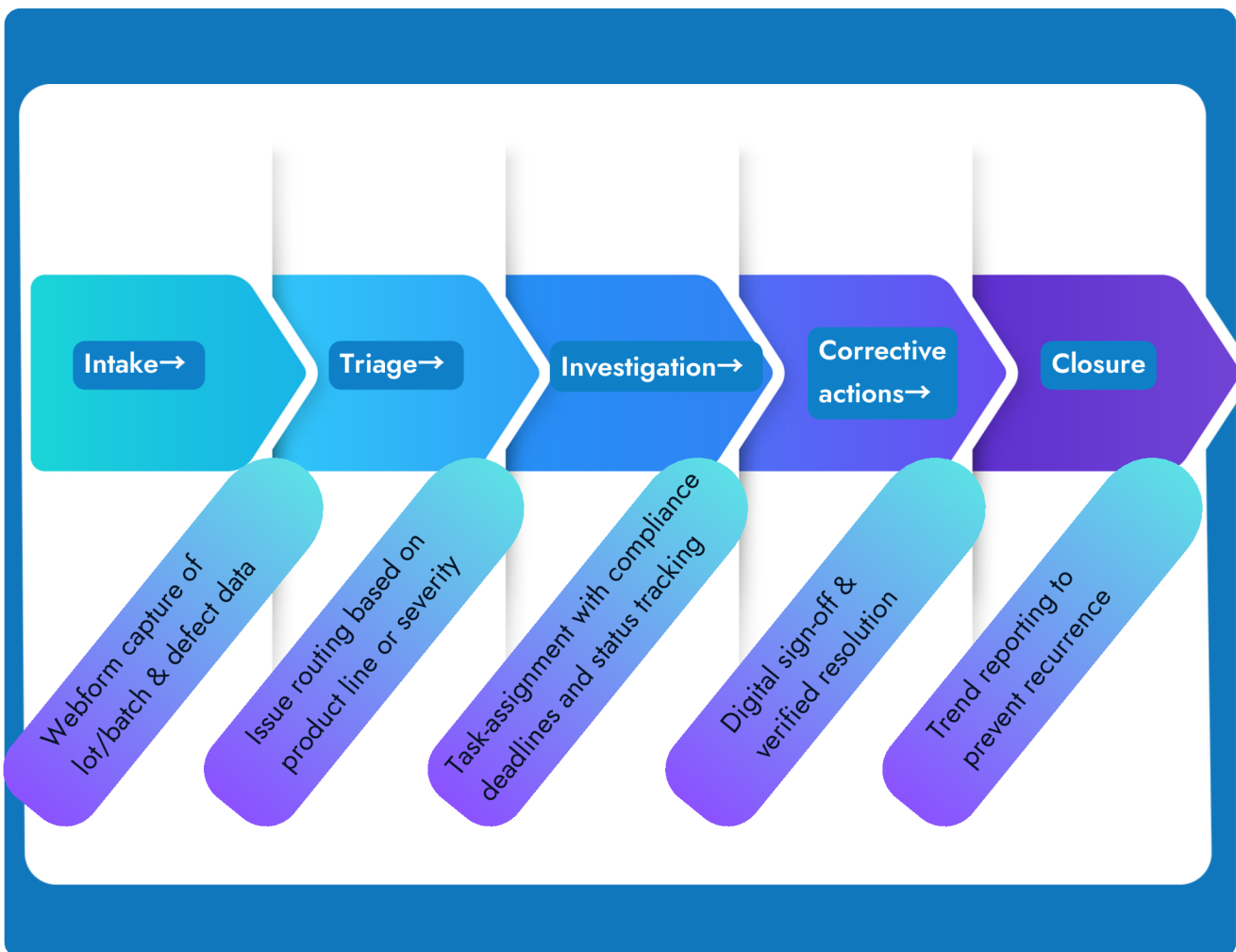
Outcome

- Faster response times
- Less staff frustration
- Data-driven staffing & resource allocation



➔ From Complaint to Closure: How The Process Looks

1. **Automated Intake:** Issues enter via email or webform, automatically capturing customer and product details.
2. **Smart Routing:** The system routes the issue to the right owner based on product line, department, or severity.
3. **Task Accountability:** Assign investigation tasks with firm deadlines and real-time status tracking.
4. **Verified Resolution:** Once actions are verified and the issue is closed, the customer is updated with a clear summary.
5. **Continuous Improvement:** Every issue feeds into trend reports, helping you prevent repeat defects and improve response times.



A Path to Success: Phased Implementation

Avoid "change fatigue" with a structured rollout designed for busy plant floors.

Phase 1: Build Your Foundation

Focus: Solve one high-impact problem, like customer complaints or product defects.

Goal: Launch basic forms and automated routing for a small pilot group.



Phase 2: Scale the Solution

Focus: Expand into maintenance, safety, inspections, or IT.

Goal: Reuse successful patterns from Phase 1 to standardize workflows across the entire plant.



Phase 3: Optimize for Performance

Focus: Deep automation, custom SLAs, and high-level KPI reporting.

Goal: Drive continuous improvement by tracking response times, closure rates, and root-cause documentation.



Phase 1

Build Your Pilot

Phase 2

Expand Departmental Reach

Phase 3

Optimize with KPIs

→ The Business Case: Measuring Your Return

The business case for modernizing your plant goes beyond just “better software.” It’s about protecting your margins. By centralizing operations, you eliminate the hidden costs of manual follow-ups, repeat defects, and audit stress.

Use the metrics below to present a clear ROI case to plant leadership and owners.

TIME SAVED

2-4 Hours Back Per Week

- Automated task follow-up
- No more ‘inbox-digging’ for histories

FEWER REPEAT PROBLEMS

Zero Downtime

- Systematized Root Cause Analysis
- Lower scrap and chargeback costs

CLEAN AUDIT OUTCOMES

100% Compliance

- Instant audit trail generation
- Continuous ISO/Quality readiness

BETTER CUSTOMER OUTCOMES

99% CSAT

- Eliminate brand-damaging quality escapes

Calculation Tip!

Multiply the hours saved per week by your team’s average labor rate. That’s your immediate weekly ROI before even accounting for reduced scrap or avoided chargebacks.

Customer Support Vendor Comparison

A written checklist keeps the focus on your plant's needs, not on generic feature lists.

| Issuetrak | Zendesk | Freshdesk | Zoho Desk | HappyFox |
|---|--|--|---|---|
| Issue tracking & help desk across internal and external teams | Omnichannel customer support platform | Customer support/helpdesk | Customer support/helpdesk | Customer support/helpdesk |
| Dedicated manufacturing solution page & use cases (support, quality, internal requests) | Broad, horizontal; no manufacturing-specific focus in core positioning | Broad SMB support; no manufacturing specialization | Broad SMB/enterprise support; no manufacturing specialization | General help desk; vertical-agnostic |
| Cloud and on-premises available | Cloud-based SaaS | Cloud-based SaaS | Cloud-based SaaS | Cloud-based SaaS |
| Admin/power user config via UI (forms, fields, workflows) | Admin configuration; rich marketplace and integrations | Admin configuration; templates and marketplace | Admin configuration; automation blueprints | Admin configuration; categories, roles, automations |
| Named agents + unlimited requesters | Per agent; multiple plan tiers (Support / Suite) | Per agent; free and paid tiers | Per agent; free and paid tiers | Per agent; cloud subscriptions |
| Manufacturing-oriented examples, internal + external issues, flexible deployment | Strong multichannel support; mature ecosystem | Low entry price, simple for basic support | Integrated with Zoho ecosystem, automation | Quick cloud setup, straightforward helpdesk |
| Not a full MES or regulated eQMS; focused on issue/ticket processes | Oriented to customer support, not manufacturing workflows | Focused on customer service; limited plant-floor context | Customer service focus; not manufacturing-specific | Customer service focus; not tailored to manufacturing |

ITSM Vendor Comparison

A written checklist keeps the focus on your plant’s needs, not on generic feature lists.

| Issuetrak | HaloITSM | SysAid | TOPdesk |
|---|--|---|---|
| Issue tracking & help desk across internal and external teams | IT service management (ITSM) | IT service management/helpdesk | ITSM & enterprise service management |
| Dedicated manufacturing solution page & use cases (support, quality, internal requests) | ITSM for many sectors; some manufacturing use but not manufacturing-specific | ITSM for IT departments; not manufacturing-specific | Specific content for manufacturing ITSM use |
| Cloud and on-premises available | Cloud and on-prem options | Cloud and on-prem options | Cloud and on-prem options |
| Admin/power user config via UI (forms, fields, workflows) | Admin configuration; ITIL-aligned processes | Admin configuration; ITIL-aligned processes | Admin configuration; ITIL/ESM aligned |
| Named agents + unlimited requesters | Per user per month ITSM licenses | Per user per month ITSM licenses | Per user licensing; details via vendor |
| Manufacturing-oriented examples, internal + external issues, flexible deployment | Rich ITSM features, ITIL support | ITSM depth, asset management | Strong ITSM/ESM workflows, manufacturing IT use cases |
| Not a full MES or regulated eQMS; focused on issue/ticket processes | IT-centric; may be more complex than needed for small plants | IT-centric; designed primarily for IT departments | ITSM/ESM focus; may require more setup for non-IT use |

Bring this guide and your filled-out checklist to a 45-minute working session where we map one real QA workflow into Issuetrak. Email us at sales@issuetrak.com.

You can use your comparison table and evaluation framework to decide how to move forward, adjust requirements, or reassess your short list.

Start here

1. Review this guide.
2. Fill out the checklist.
3. Consider your core use case, such as tracking customer complaints or product defects.

Guided Path

1. Book a working session with our specialists.
2. Have them help map one of your real processes into their system.
3. Define success criteria.



Learn more

WWW.ISSUETRAK.COM/SOLUTIONS/MANUFACTURING

For inquiries, contact
us.

sales@issuetrak.com
757-213-1350