

# Version 9.5

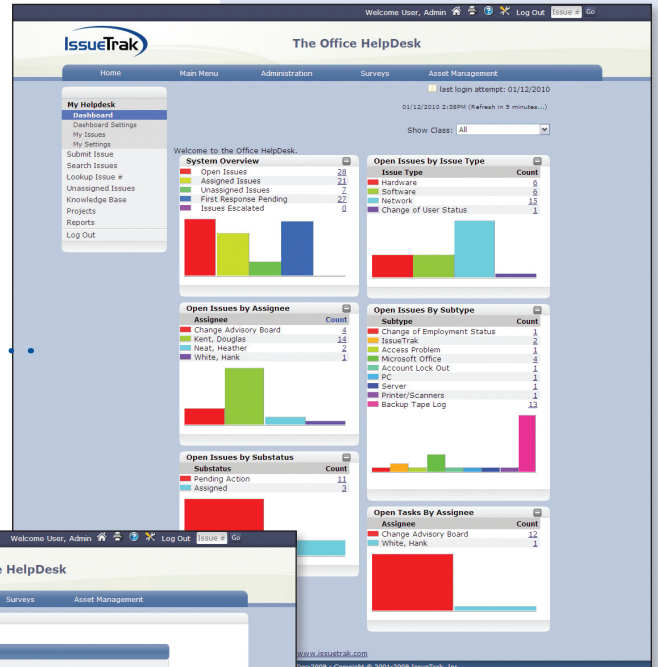
## IssueTrak Introduces a New User Interface

IssueTrak's Version 9.5 brings an enhanced look and feel and easier navigation to improve the user experience. Updated color schemes and graphics and the addition of 'type-ahead' capability make IssueTrak even easier to use. Navigation is also easier with the addition of the two new menu bars, giving quick (one-click) access to various pages.

### Dashboard

We added a top navigation bar at the top of the page with icons for Home, Print, Help, System Settings, Lookup Issue # and Logout. We also added a Menu Bar to access the Home, Main, Administration and add-on module-related pages, such as Surveys or Asset Management. This reduces the number of clicks to get from section to section.

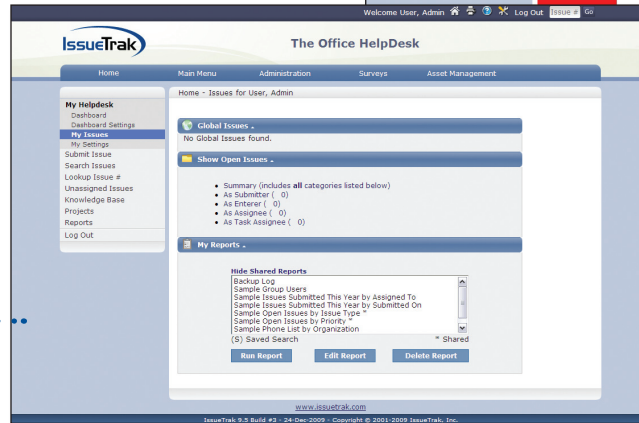
Near the top of the page, we've added the date and time of the last data refresh so you know how current the displayed metrics are. There are now expand and collapse options on each individual portal.



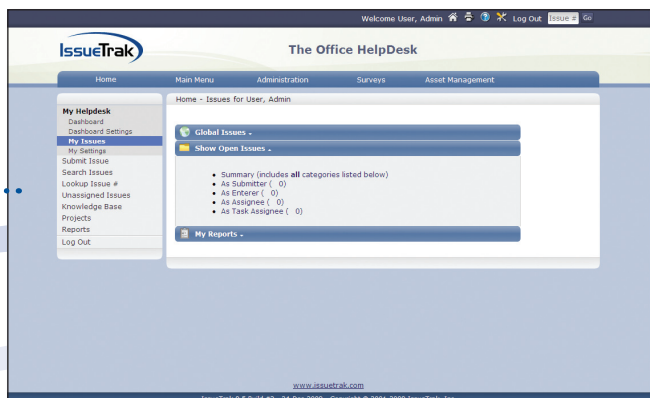
### My Issues

Note the two new menu bars remain constant regardless of what page you're on.

A new feature on the My Issues page is the new section header bars. These header bars better separate the displayed information.



Clicking anywhere in the blue bar will minimize or maximize that particular section. This is important if you happen to be looking at a long list of Global Issues or just want to get to the My Reports section quickly.

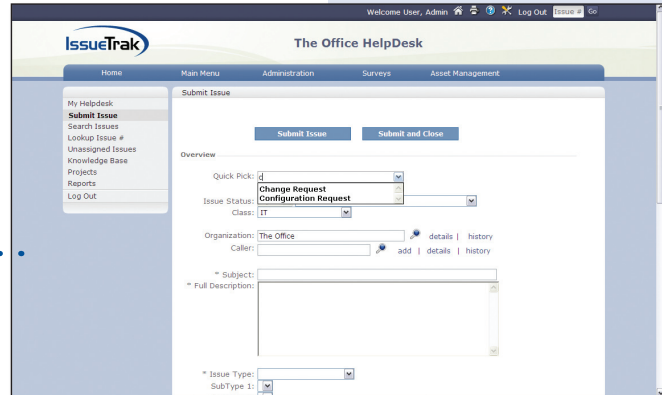


[www.issuetrak.com](http://www.issuetrak.com)

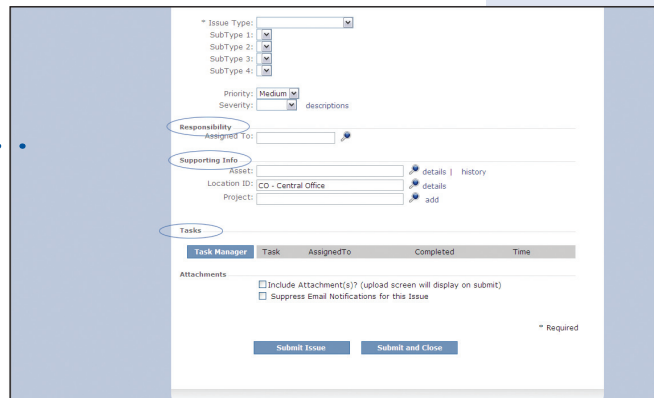
IssueTrak, Inc.  
249 Central Park Avenue, Suite 200  
Virginia Beach, VA 23462 USA  
1 (866) ISSUETRAK (866-477-8387)  
1 (757) 213-1300

## Submit Issue

We've added a type-ahead feature to filter information as you type. This feature works in Quick Picks, Organization, Projects, Assets and the various user searches, such as Submitted By, Caller, Assigned To, and Next Action. This allows you to select the relevant information quickly without having to scan through a long list.



On the Issue pages, such as View, Submit, Edit, and Close, we've added section headers to better group various fields of information together.



**For more information about IssueTrak 9.5,  
please contact your Sales Engineer directly or call  
1-866-477-8387 or 757-213-1350.**

[www.issuetrak.com](http://www.issuetrak.com)

IssueTrak, Inc.  
249 Central Park Avenue, Suite 200  
Virginia Beach, VA 23462 USA  
1 (866) ISSUETRAK (866-477-8387)  
1 (757) 213-1300